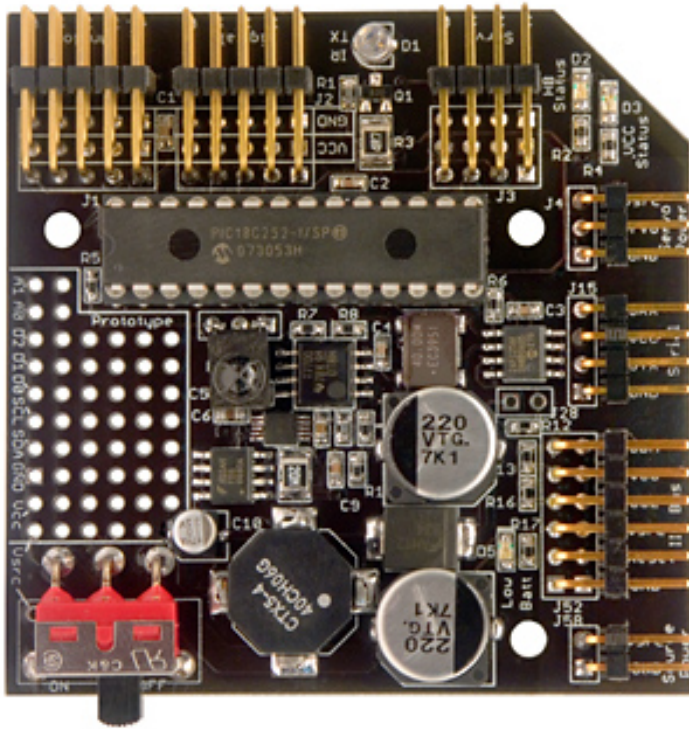


BrainStem GP 2.0

S25-GP2-BRD

\$79.00

The BrainStem GP 2.0 is a general purpose controller that can simultaneously run code stand-alone, link to a host computer, and enable reflexive actions. This module supports analog inputs, digital IO, infrared transmit / receive, I2C bus, serial interface, and high-resolution PWM servo outputs. The module also features voltage regulation and low-voltage protection as well as an on-board prototyping area.



The BrainStem GP 2.0 is an improved model of the GP 1.0 module. It has much of the same I/O, connectivity, and internal TEA program multi threading as other BrainStems, with a unique set of features:

Features

- Infrared I/O in a variety of protocols.
- 11 1k TEA program slots.
- One additional 16k TEA program slot.
- 5 Digital Inputs/Outputs.
- 5 10-bit Analog Inputs.
- 4 RC Servo Outputs.
- A prototyping area with 2 analog, 3 digital, I2C, Vcc, and Vsrc exposed via through holes.
- Module powers down when input voltage of less than 3.2 V is detected.

- Regulated 5.0V output provided regardless of source voltage; 3.2 V to 28 V source voltage accepted.
 - Onboard power switch and low battery indicator.
 - I2C Fast Mode Plus (1Mhz) support.
- BrainStem GP 2.0 is supported on Windows, MacOS X, and Linux. The module offers "plug and play" ease for connecting many accessories with convenient power and ground connections for each I/O pin, provides analog and digital I/O lines, infrared I/O, high-resolution servo outputs, and a 1 MHz I2C bus.
- BrainStems have a kernel (internal OS) allowing the modules to operate as a serial slave device, run concurrent TEA (Tiny Embedded Application) programs, and handle reflexive actions simultaneously. All BrainStem GP 2.0 modules can be networked with other BrainStem modules across the I2C bus.

