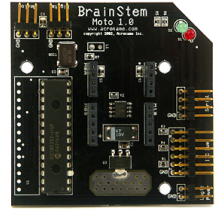


# BrainStem Moto 1.0 Module Datasheet

## S10-MOTO-BRD

Last Modified 2011-12-13

Acroname Robotics  
www.acroname.com



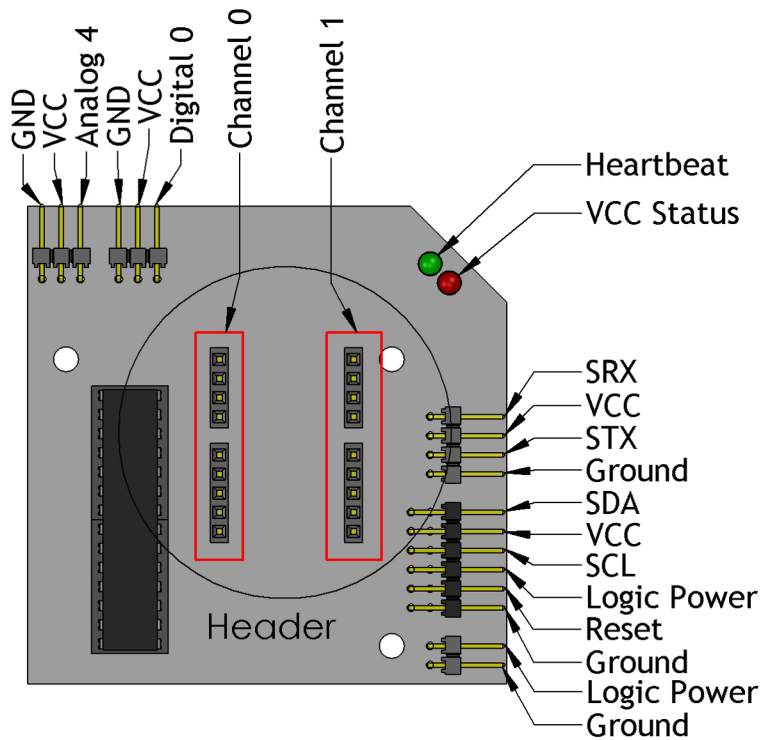
### Overview

The Motion (Moto) module provides a collection of I/O functions for robotics and control systems. Combining programmability and a built-in command set, this module is both a stand-alone controller and real-world interfacing tool.

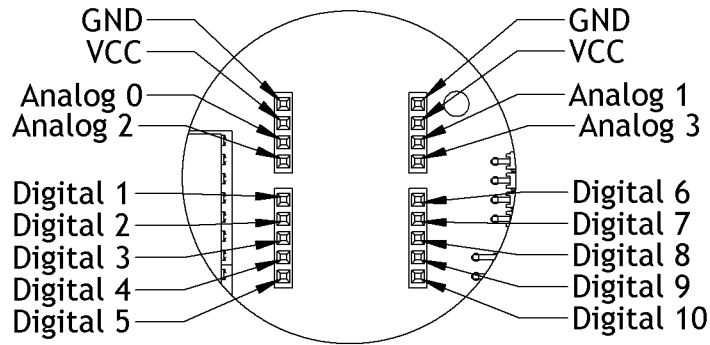
### Features

- 2 Independent motion control channels with built in PID control.
- 11 1k TEA program slots.
- 1 16k TEA program slot.
- 1 Digital Input/Output.
- 1 10-bit Analog Input.
- Regulated 5.0V output provided regardless of source voltage.
- I2C Fast Mode Plus (1Mhz) support.

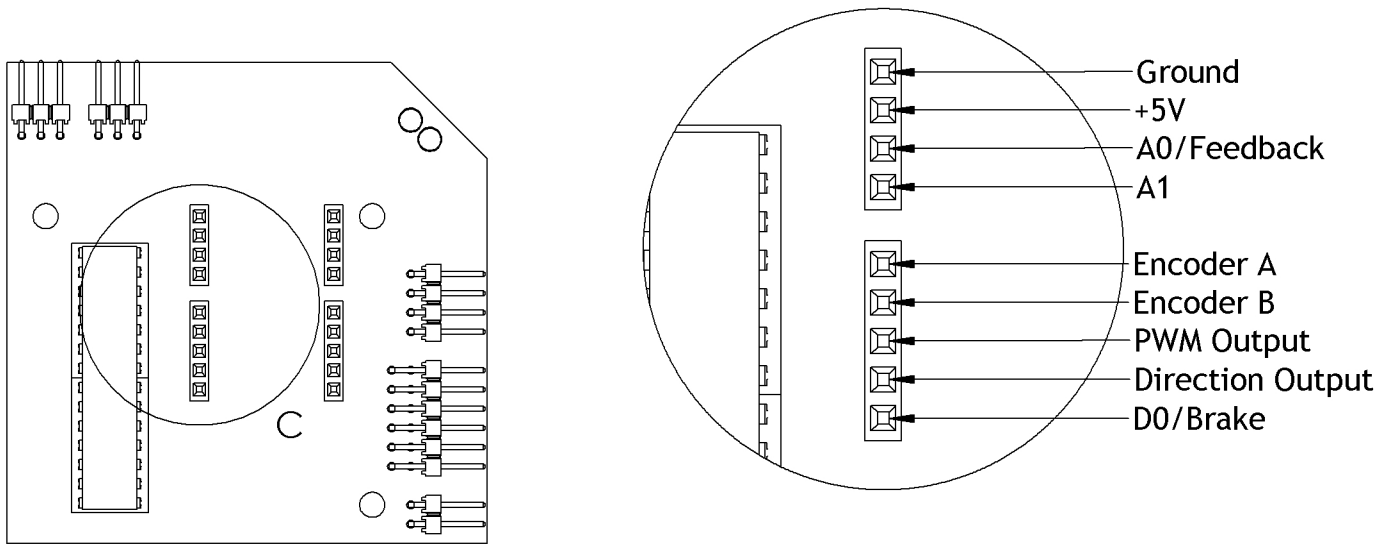
Recommended and Maximum Ratings			
Value	Minimum	Nominal	Maximum
Input Supply Voltage	6.25V	-	26.0V
VCC (Regulated)	-	5.0V	-
I_VCC (Maximum)	-	-	1.0A
Analog Voltage Input Range	0.0V	-	5.0V
Digital Output Isource	-	-	25mA
Digital Input Isink	-	-	25mA
Digital Logic High	4.7V	-	5.3V
Digital Logic Low	0.0V	-	0.75V



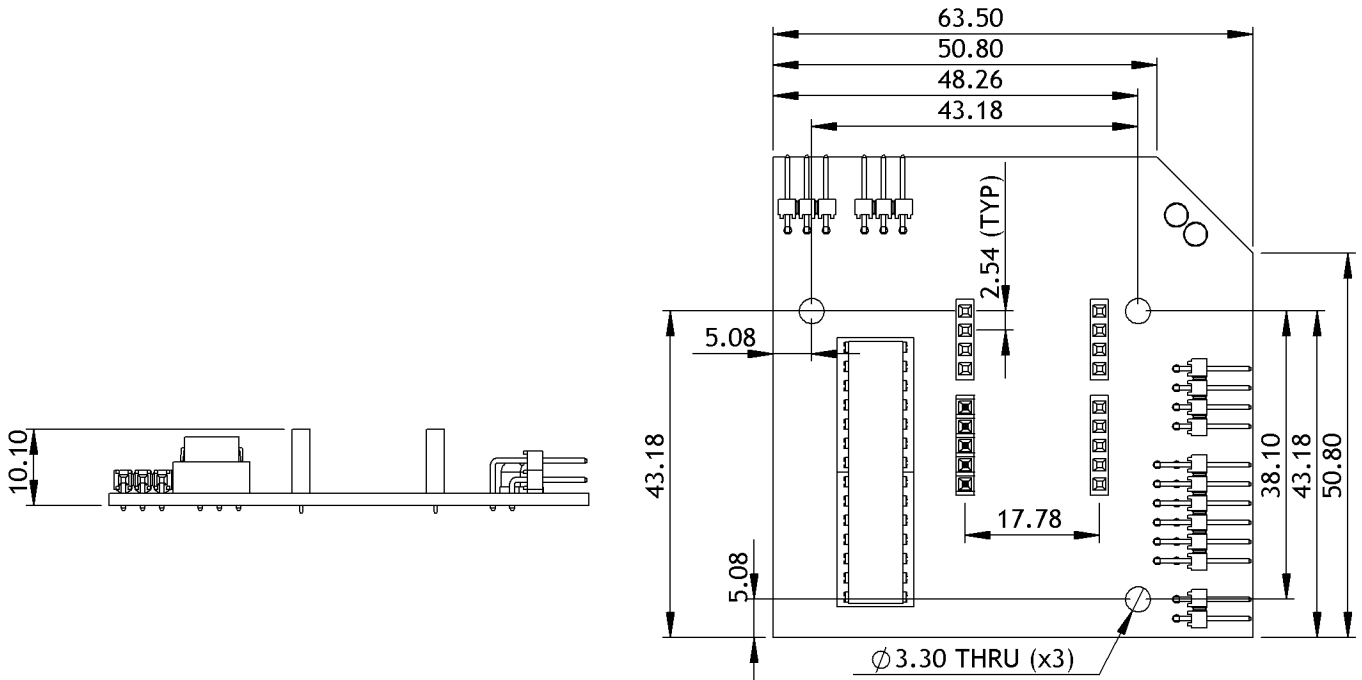
Pinout Diagram



Details of H-bridge Header on Moto.



Acroname H-bridge standard



Dimensions are in millimeters