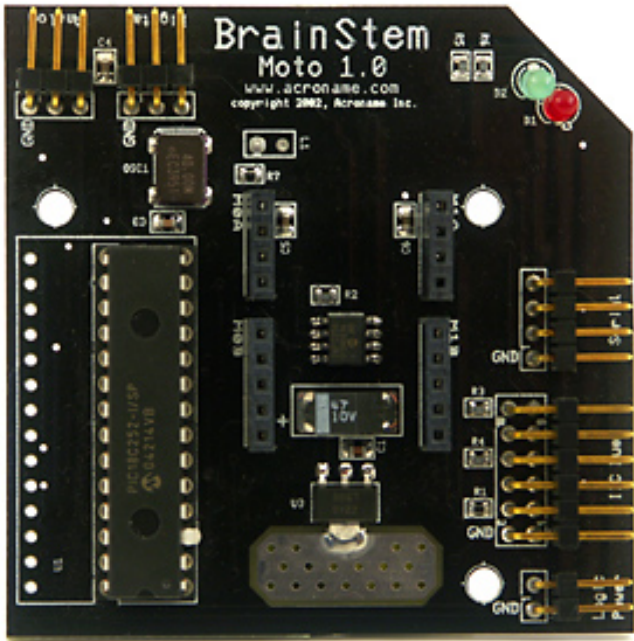


BrainStem Moto 1.0 Module S10-MOTO-BRD \$72.00



The BrainStem Moto 1.0 is a 2 channel motion controller that can simultaneously run code stand-alone, link to a host computer, and enable reflexive actions. This module supports analog inputs, digital IO, I2C bus, serial interface, and motion channels. Each motion channel offers flexible PWM or PID motors control with various types of feedback that includes encoders, analog input, and Back-EMF speed control.



The Moto 1.0 module much of the same I/O, connectivity, and internal TEA program multi threading as other BrainStems, with a unique set features:

Features

- 2 Independent motion control channels with built in PID control.
- 11 1k TEA program slots.
- 1 16k TEA program slot.
- 1 Digital Input/Output.
- 1 10-bit Analog Input.
- Regulated 5.0 V output across a wide input range.
- I2C Fast Mode Plus (1MHz) support.

BrainStem Moto 1.0 is supported on Windows, MacOS X, and Linux. The module offers "plug and play" ease for connecting many accessories with convenient power and ground connections for each I/O pin, provides analog and digital I/O lines, infrared I/O, 2 channel motion control, and a 1 MHz I2C bus.

BrainStems have a kernel (internal OS) allowing the modules to operate as a serial slave device, run concurrent TEA (Tiny Embedded Application) programs, and handle reflexive actions simultaneously. All BrainStem Moto 1.0 modules can be networked with other BrainStem modules using the I2C bus.

