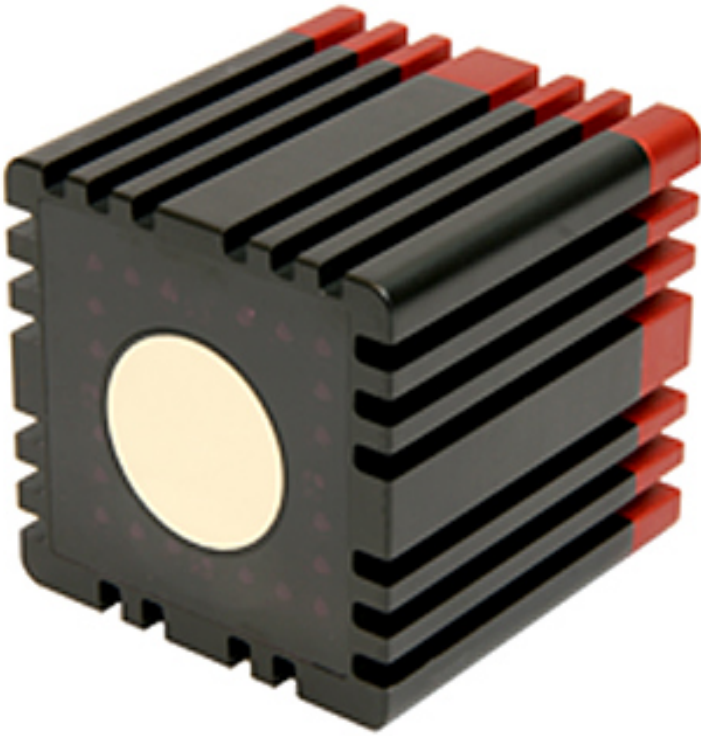


Mesa 10Meter Ethernet Wide FOV R339-SR4000-10M-ETH-FOV \$4295.00

The SR4000 is an optical imaging system which provides real time distance data at video frame rates. Measurements are obtained using the time-of-flight (TOF) principle out to 10 meters with a wider Field of View. This 12 V powered device delivers information over ethernet transport to your host processor for interpretation and visualization.



MESA Imaging's website has many helpful resources for understanding and using the SwissRanger imaging system, please check their website for more information.

Package Contents

Included in the package are the sensor housed in an anodized aluminum enclosure, a 12 V wall transformer power supply, an ethernet cable, 6 ft trigger cable and a CD-ROM. The CD-ROM contains a manual, drivers for Windows and Linux and a demo program for Windows. The source code for the console and data visualization demo programs are also included.

Drivers and Downloads

Drivers and software downloads are available through MESA Imaging's website. Driver downloads are available for Windows and Linux. Demonstration software is available for Windows.



Specifications	
Illumination Wavelength	850 nm
Maximum Framerate	50 FPS
Pixel Array Size	QCIF - 176 (h) X 144 (v)
Field of View	56° (h) x 69° (v)
Pixel Pitch	40 µm
Voltage	12.0V (-2% to +10%)
Current	0.8A nominal, 1.0A maximum

Acroname Inc.
4822 Sterling Drive
Boulder, CO 80301
USA
voice: 720.564.0373
fax: 720.564.0376
sales@acroname.com

