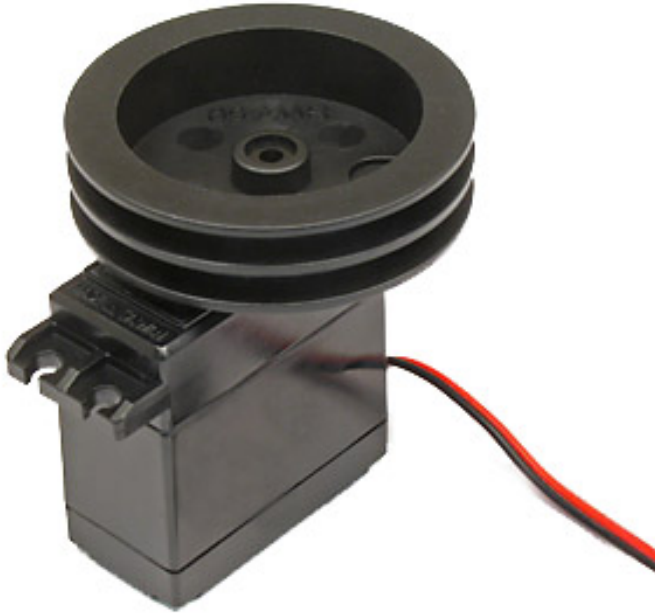


High Torque Full Turn Servo R298-1T-SERVO \$18.00

A great servo for robotic heads and turrets. It can pivot a full 360° and has about twice the available torque of a standard servo. Comes with servo horn and mounting hardware.



The servo weighs 50.0 g (1.80 oz) and has a 25 tooth spline. It mates with Futaba compatible accessories. White wire is the signal, middle is power, and black is ground.

Specifications			
Voltage	Operating Speed	Output Torque	Dimensions
4.8 V	0.26 s/60°	0.65 Nm	40 x 20 x 37 mm (1.57 x 0.79 x 1.46 in)
6 V	0.21 s/60°	0.749 Nm	40 x 20 x 37 mm (1.57 x 0.79 x 1.46 in)

